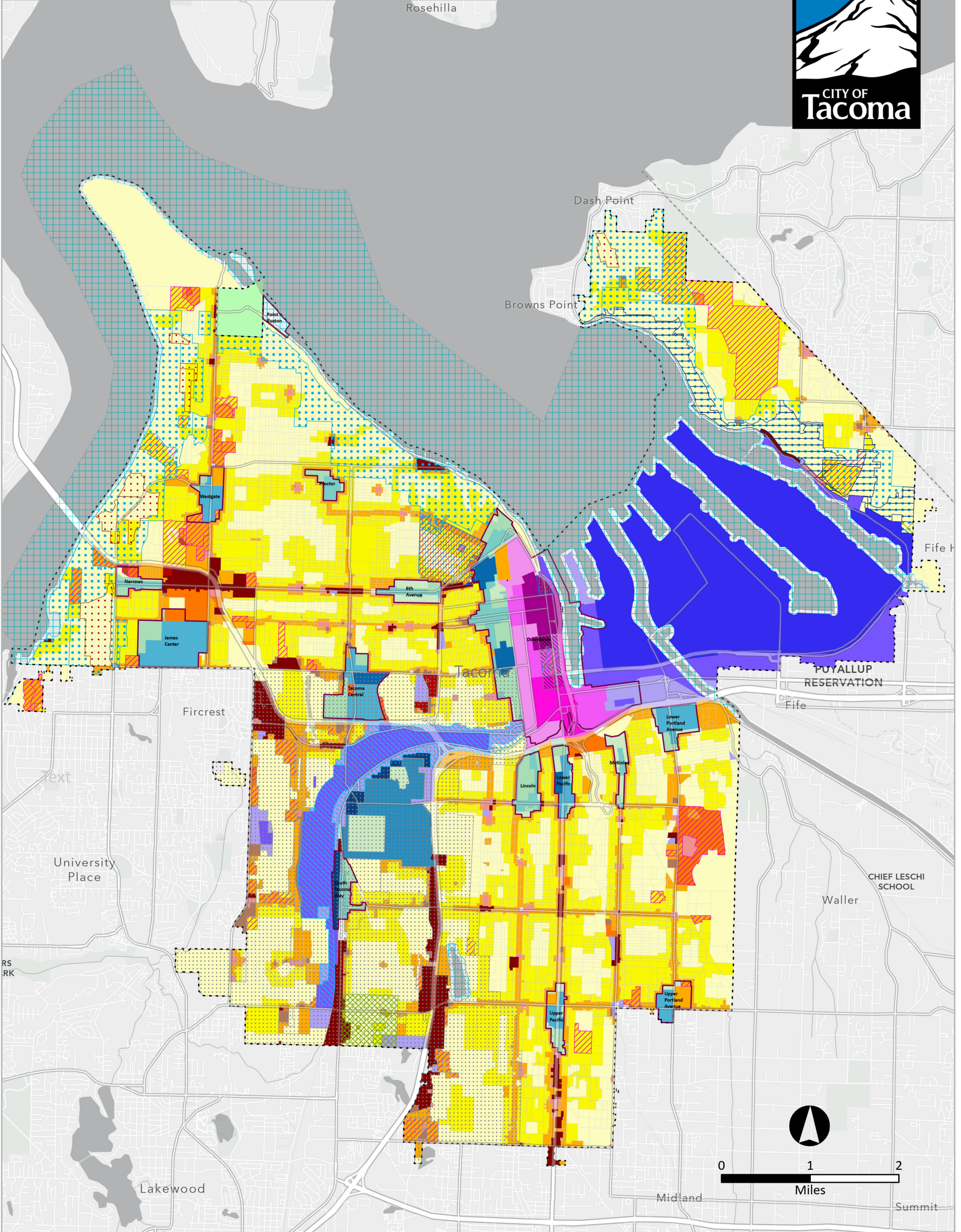
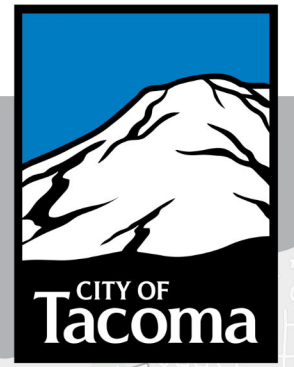


# Zoning Districts



Date Saved: 6/21/2024 12:18 PM Path: \\gis\it\Projects\2024\IP023\_PDS\_HomeIn TacomaZoningUpdate\MAPS\HomeIn TacomaZoningUpdates.aprx

- |  |
|--|
| <ul style="list-style-type: none"> <li>⬜ Tacoma City Limits</li> <li>⬜ Mixed Use Centers</li> <li><b>Zoning Districts</b></li> <li><b>Base Zone</b></li> <li>UR1-Urban Residential 1</li> <li>UR2-Urban Residential 2</li> <li>UR3-Urban Residential 3</li> <li>R4-Multifamily Dwelling</li> <li>R5-Multifamily Dwelling</li> <li>URX-Urban Residential Mixed Use</li> <li>RCX-Residential Commercial Mixed Use</li> <li>NCX-Neighborhood Residential Mixed Use</li> <li>UCX-Urban Residential Mixed</li> <li>DR-Downtown Residential</li> <li>DMU-Downtown Mixed Use</li> <li>WR-Warehouse Residential</li> <li>T-Transitional</li> <li>HMX-Hospital Medical Mixed</li> <li>DCC-Downtown Commercial</li> <li>C1-Commercial</li> <li>C2- Commercial</li> <li>CCX-Community Commercial Mixed Use</li> <li>CIX-Commercial Industrial</li> <li>PDB- Planned Development</li> <li>M1-Light Industrial</li> <li>M2-Heavy Industrial</li> <li>PMI-Port Maritime and Industrial</li> <li>RUS-Ruston</li> <li>Combined Shorelines</li> <li><b>Zoning Districts Overlays</b></li> <li>CONS: Conservation</li> <li>PRD: Planned Residential Development</li> <li>STGPD: South Tacoma Groundwater Protection</li> <li>VSD 20: View Sensitive 20</li> <li>VSD 25 : View Sensitive 25</li> <li>HIST - Historic Special Review</li> <li>ACD: Airport Compatibility</li> <li>ST-M/IC : South Tacoma Manufacturing/Industrial</li> <li>PTD-A: Port Transition District</li> <li>PTD-B: Port Transition District</li> </ul> |
|--|

